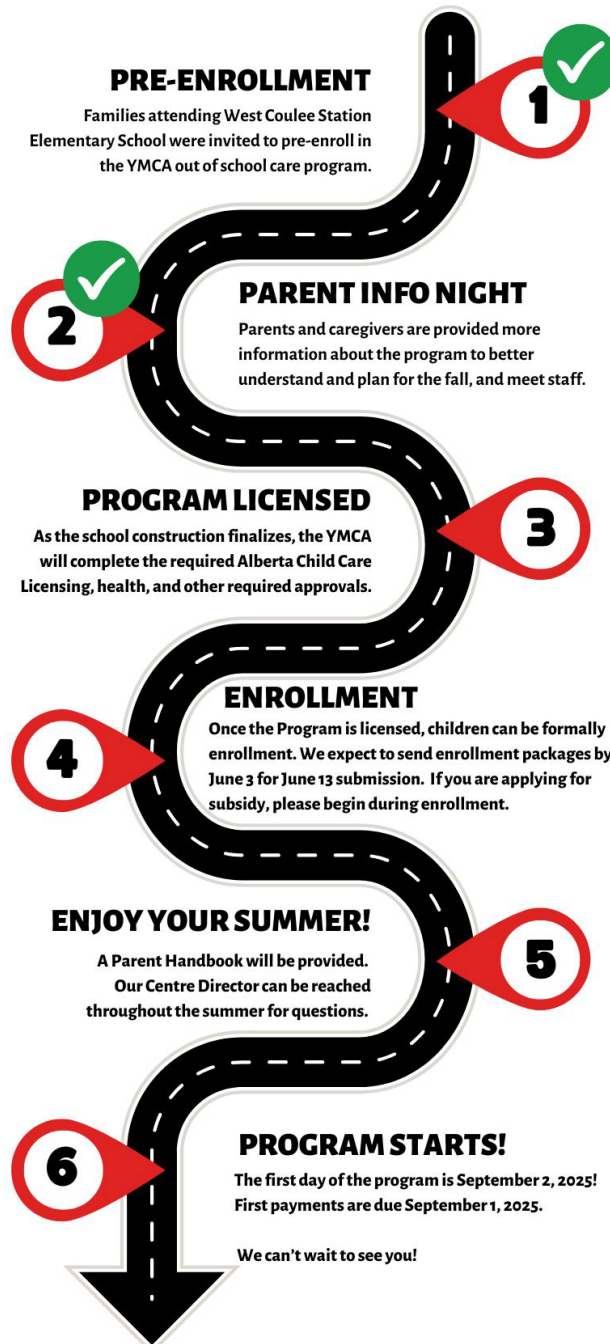


West Coulee Station Out of School Care Frequently Asked Questions

Updated August 6, 2025 – All information subject to change as program continues to develop with school construction and opening.

For more information, please contact G-Nel Nelson g-nel.nelson@lethbridgeymca.ca



BASICS

Where is the program located?

Our West Coulee Station Out of School Care will be operated out of the West Coulee Station Elementary School designated program spaces such as gymnasium, common space and outdoor playgrounds/fields, as well as Room 131 for our West Coulee Station Kinder Care

What are the hours for the program?

Our program is planning to operate from:

- From school facility opening at 7:15am until morning school bell time ***please note this time has changed from a predicted 6:45am based on school building opening times.**
- From afternoon school bell time until 6:00pm
- On Fridays from lunchtime bell, until 6:00pm
- **NEW:** Kindergarteners will receive full day care from program open to close in Room 131. West Coulee Station Elementary has generously granted the YMCA a room for full day programming for kindergarten program participants. Families can drop KG children to their school daily for school and/or care!

When will the program be open and closed?

Out of school care will be provided starting with the first day of school – September 2, 2025. We are normally open for all non-holiday school breaks such as spring break, as well as open for school PD days.

The program will close for the summer on the last day of school – June 25. We are normally closed on all general holidays, as well as 3-4 staff development days per year. Winter break usually includes additional closure dates to allow staff to celebrate with their families as well. Summer opportunities for care will be announced to all participants in early 2026.

Each year in late fall, a closure dates list is provided to all families for the coming calendar year. See attached child care closure dates poster for 2025 details.

When will my child be formally enrolled?

As the school continues to be constructed, the YMCA will be able to receive our license to operate the program. Once we receive the formal license, program packages will be submitted to families for formal enrollment. We expect to send enrollment packages to all pre-enrolled families by June 3, for submission due by June 13.

All families who have received a pre-enrollment confirmation are guaranteed the opportunity to enroll by June 13. Any enrollment forms not submitted by June 13 (or date assigned) are subject to be re-assigned to families on the waitlist.

PLEASE NOTE THAT CANCELLATION POLICY OF 30 DAYS NOTICE IS APPLIED TO ALL CONFIRMED ENROLLMENTS.

I.e. To cancel for September 2025 notice must be given by August 1, Sept 1 for October cancellation.

FINANCIALS

How much does the program cost?

- **Kindergarten:** Parent Fee \$326.25 (Child Care Fee \$966/mo, before Affordability Grant)
Kindergarten children are NOT eligible for Alberta Child Care Subsidy.
- **Grade 1-5 (Before-Only, School Closure days not included)** \$235/month
- **Grade 1-5 (After-Only Care)** \$515/month
- **Grade 1-5 (Before & After School Care)** \$565/month

This fee is slightly less than the program at the Cor Van Raay location because it does not include daily transportation. All other services are consistent for children in both programs: high quality programs, professional and experienced staff, snack included, and access to Cor Van Raay amenities like aquatics centre and Indoor Playground on PD Days and School closures.

How do payments work?

Payments are set up through the enrollment process and include options for credit card or pre-authorized debit. If third party payers are providing some or all the fee payment, please set this up directly with the Centre Director.

Is subsidy available?

Yes, subsidy is available for eligible families in Grades 1-5 only per the April 2025 Government of Alberta update. To learn more about the requirements and to apply, please visit the Government of Alberta's Child Care Subsidy page: [Apply for Child Care Subsidy](#).

Children in Kindergarten receive the Affordability Grant to automatically reduce their fee to \$326.25 per month, and as of April 1, 2025 are no longer eligible for subsidy.

Is food provided?

Yes, we provide morning and afternoon snacks for the children. Children are required to bring a lunch from home on Fridays, and days when they are with us for the full days (PD days, school breaks etc.). There is no fee for food provided.

PROGRAM DETAILS

What curriculum will the program use?

Our program follows the *A Place to Connect™* curriculum, a YMCA program used nationwide. This curriculum emphasizes child-led developmental activities, focusing on physical activity, health, and social development. Children engage in activities facilitated by YMCA Staff, designed to promote both physical activity and developmental relationships.

What facilities are available to children attending the program?

Includes daily use of an out of school care room (Room 131), school gymnasium, common area and outdoor playgrounds and may offer optional field trips to the Cor Van Raay YMCA or other locations.

Children attending the West Coulee Station BASC will also be welcomed to the Cor Van Raay BASC program for field trips on PD days and school breaks. While at the Cor Van Raay YMCA, children will be provided time to play in the Indoor Playground, Aquatics Centre, and the Rec Room.

How will the environment be set up?

We design our environment to meet curriculum standards, ensuring high-quality, engaging environments for children. Toys and materials are available in quantities that offer variety and choice, all in good condition and accessible to children. A minimum of five learning areas are always available, including:

- **Games:** board games, card games, and group activities
- **Blocks:** building materials for creative play
- **Puzzles:** a variety of puzzles for different skill levels
- **Art Materials:** for painting, drawing, and crafting
- **Science:** hands-on materials for exploration and experiments

Who will be caring for my child?

The Early Childhood Educators at the YMCA of Lethbridge are educated, trained, skilled and dedicated staff who have a background in child and youth development, program planning, and love spending the day with your children! We meet or exceed Alberta Child Care ratios, with at least 1 adult per 15 children, in groups no larger than 30 children.

PLANNING YOUR DAY - A parent handbook will be provided after formal enrollment.

Who will we communicate with?

The Centre Director is G-Nel Nelson, who oversees the child care and out of school care program at YMCA Crossings Child Care Centre at Cor Van Raay YMCA.

g-nel.nelson@lethbridgeymca.ca

The Centre Supervisor is Sara Gandy, an experienced out of school care educator and leader at YMCA Crossings program and will be the onsite leader.

sara.gandy@lethbridgeymca.ca

Dedicated full time and part time out of school care educators will provide consistent care to your children onsite.

All families will have access to a communication app called Lillio, where messages, photos, and documents will be shared. You are always encouraged and welcome to reach out in person, via phone or email, or the app for day to day needs.

Drop Off and Pick Up

A designated door for drop off and pick up is being established with the school administrators, which will be clearly marked, and be easily accessible to the program for pick up. There will always be contact information posted at all doors if required.

When dropping off, parents will need to sign children into care with an educator. Children cannot be dropped off on the school site and come into the program alone. This is per Alberta Child Care Regulation and YMCA commitment to safety.

When signing children out, adults must provide government issued ID, and all adults picking up must be on an approved pick up list.

Transferring between the program and class

YMCA and school staff will collaborate to ensure a safe transfer of children between the program and classes and back at the end of the day.

Parents will be responsible for notifying both the YMCA and the school if their child is not attending the program. While we always aim to collaborate with families and the school, the YMCA cannot take responsibility for communicating to the school on the family's behalf.